

# Installation Instructions for The Island Style Roof

## Materials:

- 1x4 pressure treated boards
- PermaBase® 5/8" Thick 24" x 96"
- 2-1/2" Deck Screws – ACQ treated lumber corrosion resistant coating
- 1-5/8" bugle-head cement board screws
- Two 6-3/8" spacers (cut from 1x4) for positioning 1x4 boards
- Two 20-1/8" spacers (cut from 1x4) for positioning PermaBase®

## Tools Required:

- Circular saw with 7-1/4" 24 tooth blade (See photo #1)
- Power screw gun (not hammer drill) with bits to fit fasteners
- Chalk line
- Tape measure

## Installation of PermaBase®

PermaBase® cement boards are generally available in 4' x 8' size.

Using circular saw cut boards 24" wide.

Cut 4" wide starting strips to install at eave to establish correct position for the first 24" wide panel.



(Photo #1)

- 1) Set 4" PermaBase® starter strip at eave. Position 1x4 over starter strip flush with face and fasten 1x4 through to rafters using two 2-1/2" deck screws at each rafter. (See photo #1)



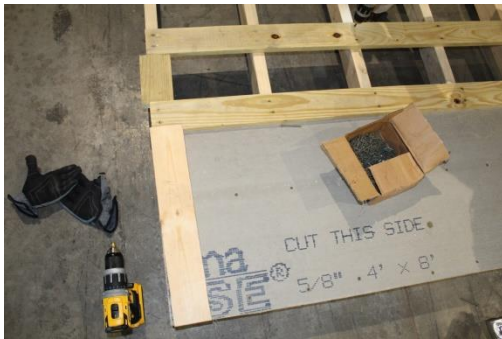
(Photo #2)

- 2) Using 6-3/8" spacers position another 1x4 from the eave starter strip and fasten to each stud using two 2-1/2" deck screws. (An alternate screw for this board only is minimum #7x2" ACQ treated lumber corrosion resistant.) (See Photo #2)



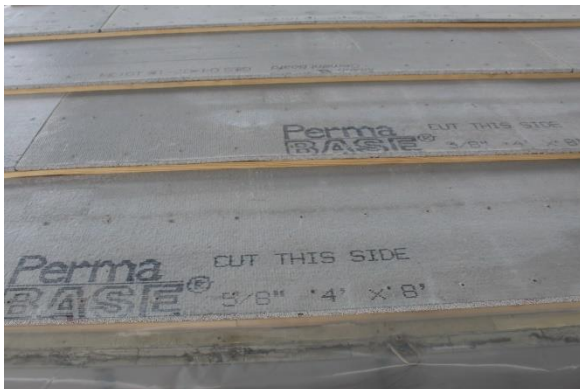
- 3) Set first row of 24" wide PermaBase® with the cut edge flush with the eave starter strip face. Fasten to each 1x4 with 1-5/8" cement board screws 6" o.c. stating 2" in from one edge. Screw heads should be flush with or slightly below the top of the PermaBase®. Do not overdrive screws. (See photo #3)

(Photo #3)



- 4) Using the 20-1/8" spacer and/or chalk line, set next row of 1x4 at the top of the cement board and fasten through to the studs as before. (See photo #4)

(Photo 4)



- 5) Continue positioning and fastening the next 1x4 as in Step #2 and the 24" wide PermaBase® until you have reached the roof ridge. (See photo #5)

(Photo #5)

**Verify board spacing periodically with a tape measurement from the eave. This will ensure the courses run straight.**



**Fascia Board:** If required. Cut and notch a 1x4 or 1x6 to match the roof profile and fasten in place flush with the top of the roof line using the appropriate length deck screws 12" o.c. (See photo #6)

(Photo #6)

**Ridge Cap:** Cap the ridge in accordance with the roof style. Contact the Acrylabs application specialist for recommendations. The Acrylabs liquid applied system will wrap up over the ridge to prevent any moisture from entering.

Drafted by: Caroll Marston

Date: 22Aug2018